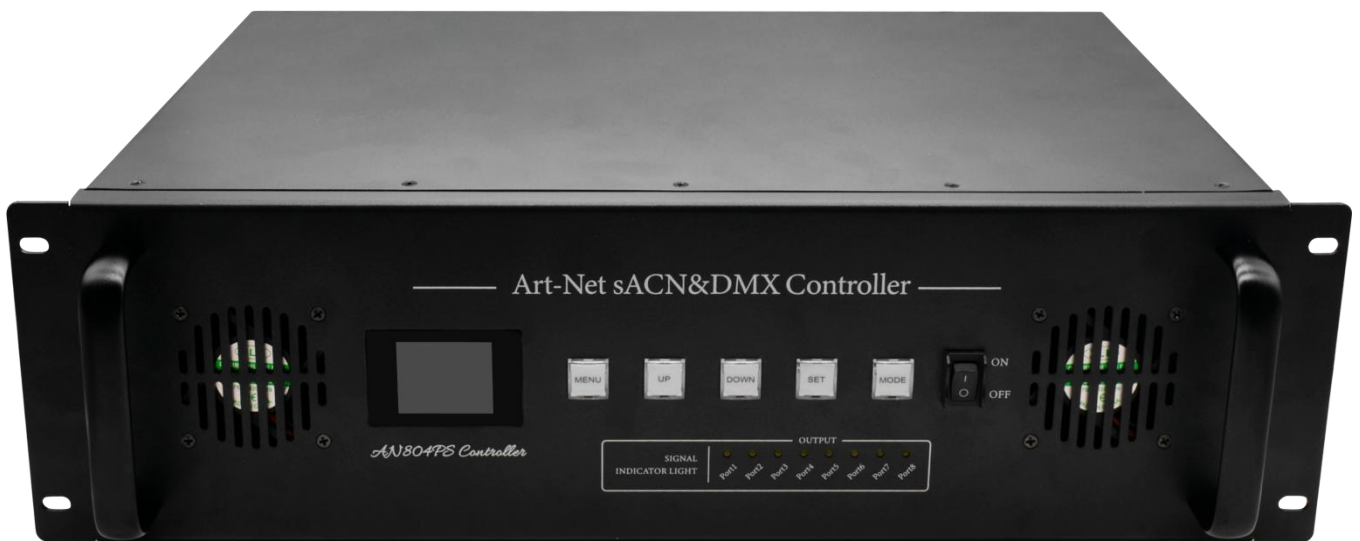


Product Specification

CL-AN804PS Controller

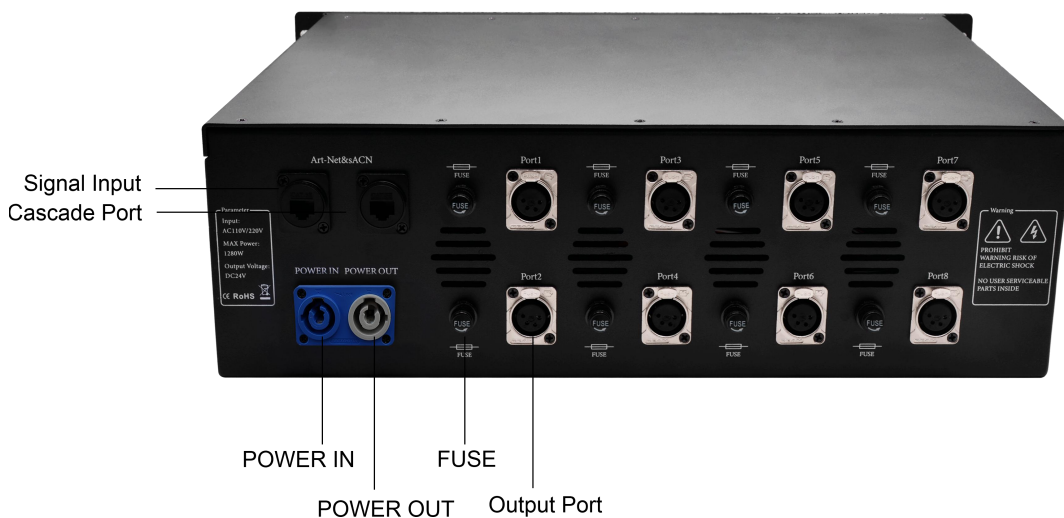


Product name: 3U chassis 8-port controller

Product mode: CL-AN804PS

Overview: With standard size of 3U chassis, based on the ARTNET protocol Ethernet network driver, the controller can convert the network data packets in the ARTNET protocol into standard DMX512 data or SPI data. The controller has three control modes: ARTNET、DMX and sACN mode, which can perform effect recording and can be used offline; it has 8 output ports, and each port support 680 pixels. This product can be widely used in stage performance lighting control system, stage performance, bar lighting and other occasions, and it is more convenient to use with our lamps.

Product picture:



◆ Product features:

- Input voltage: AC110-220V;
- 65536 gray scale control;
- 8 ports, each port support 680 pixels;
- Each output port is with a removable fuse. When the current in the circuit exceeds the rated current value of the fuse, the fuse will automatically blow to prevent the circuit from being damaged due to overload;
- Three control modes, ARTNET、DMX and sACN mode;
- Support effect recording and offline control, 31 effects can be recorded;
- Built-in power supply, simple wiring, easy to use;

◆ Parameter list

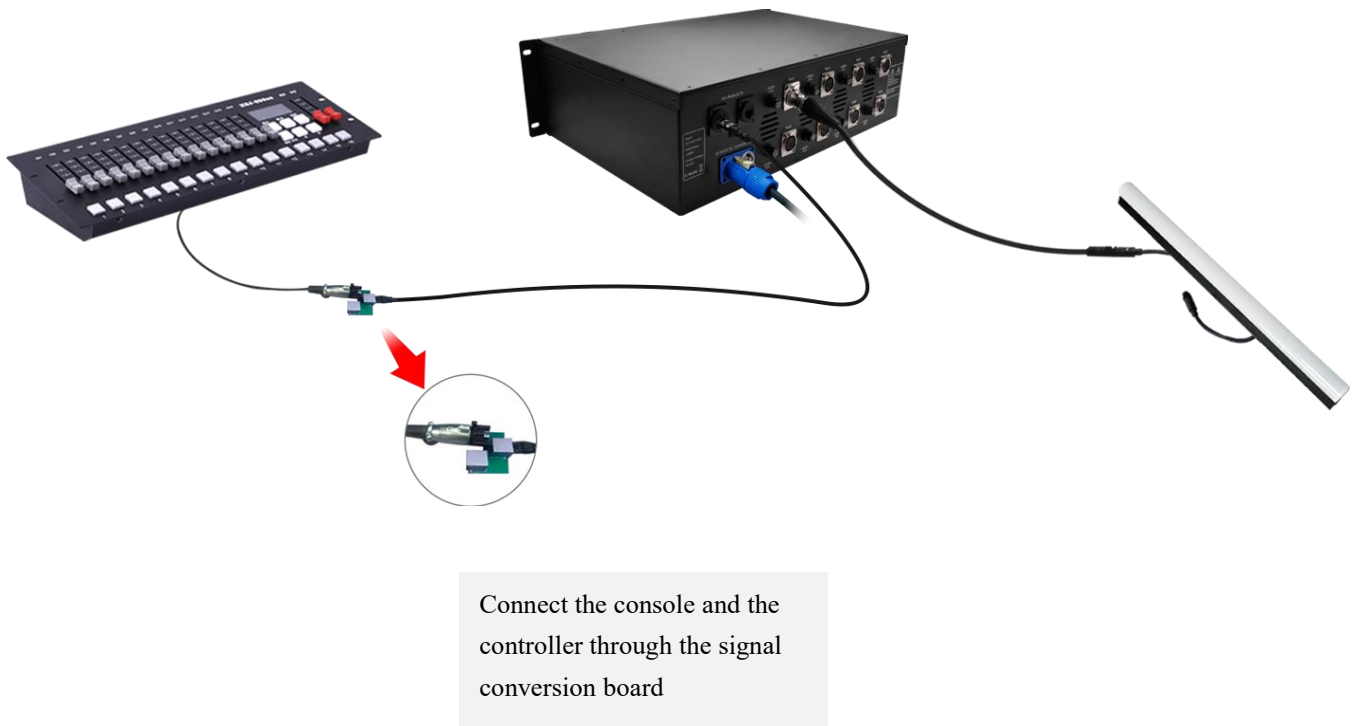
Parameter	Unit	Min	Typical	Max
Working voltage(AC)	V	110	220	220
Power	W	—	1280	—
Output port	PCS	—	8	—
Output voltage (V)	V	—	DC24	—
Port loading points	PIX	8*170	—	8*680
Support IC type	—	—	WS2811/SK6812/UCS1903/UCS8903/UCS9812/DMX512	—
Supporting software	—	—	MAD-SHOW (MADRIX/RESOLU/MA D-MAPPER)	—
Control mode	—	—	ART-NET/DMX/sACN	—
Working mode	—	—	ART-NET/SD Card	—
Working mode Controller IP address	—	—	2.0.0.X	—
Subnet mask	—	—	255.0.0.0	—
Computer IP address	—	—	2.0.0.2	—
cascaded units	PCS	—	—	32
Product weight	KG	—	8	—
Product size(L*W*H)	MM	—	483*350*133.35	—
Product color	—	—	Black	—
Product material	—	—	Aluminum	—

◆ Connection

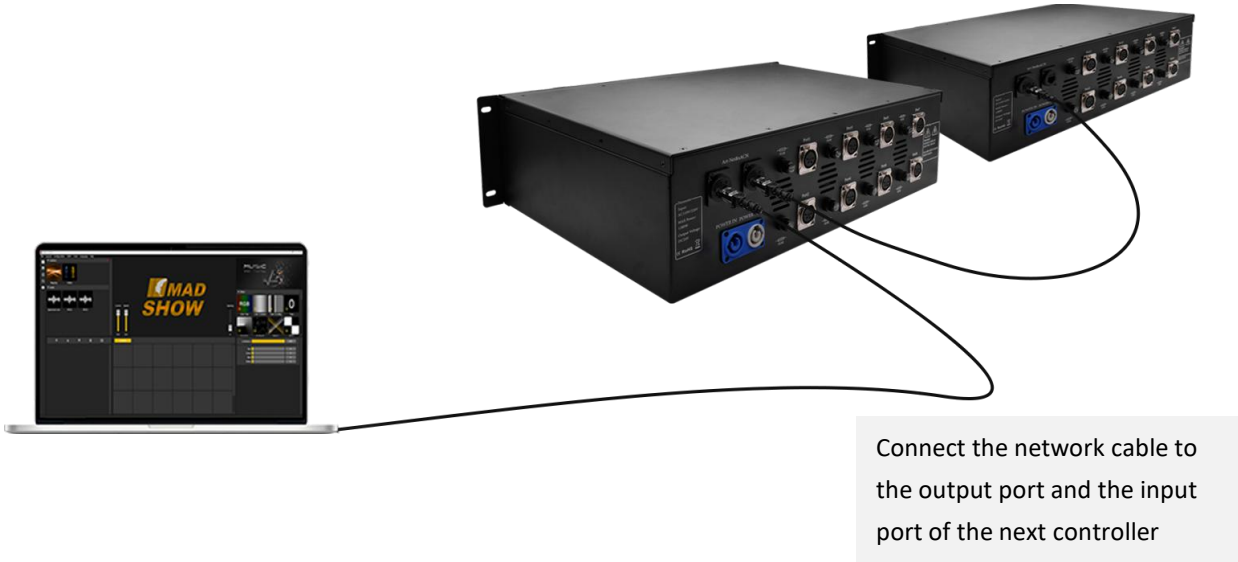
① Connect controller with software to control led lights



② Connect controller with console to control led lights



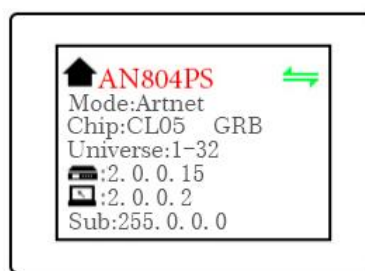
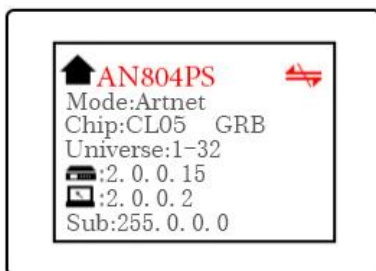
◆ **Multiple units can be used in cascade**



Note: When multiple controllers are cascaded, each controller IP setting cannot be the same! (Except for sACN mode)

◆ **Control mode**

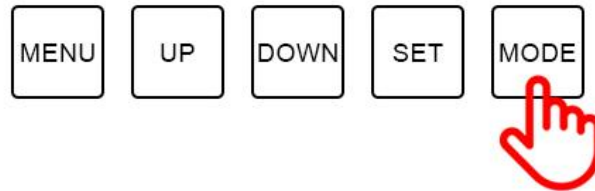
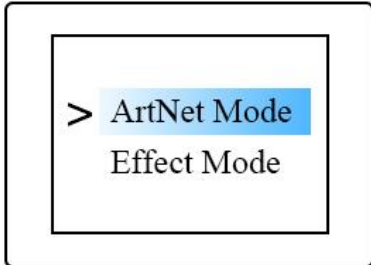
After the controller is powered on, the red mark on the right side of the display indicates that there is no signal access; When the signal is connected, the signal mark is green, indicating that there is ARTNET signal access;



Mode switch

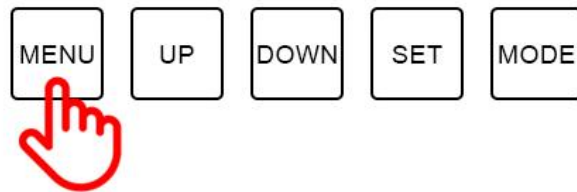
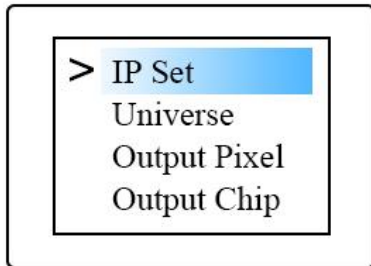
Short press the MODE button to enter the mode switching interface, click and press the MODE button to switch the mode,

Long press the button to exit the mode selection interface;

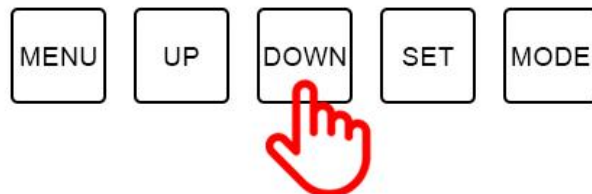
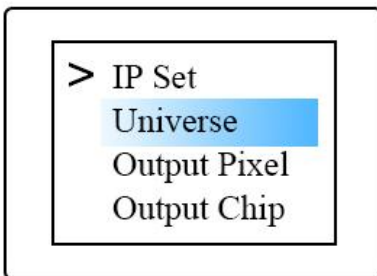


ARTNET mode

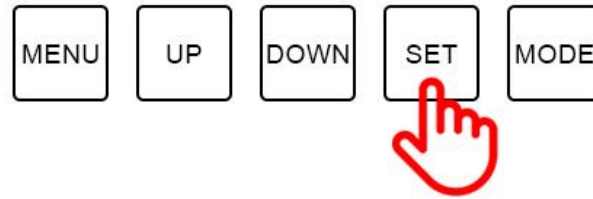
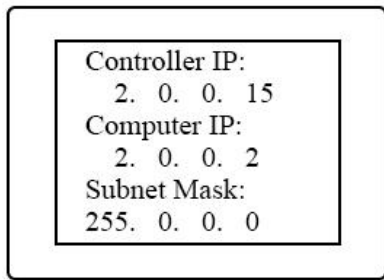
Short press the MENU button to enter the menu bar



Short press the MENU button to enter the menu bar , Click the UP DOWN button to toggle the options;



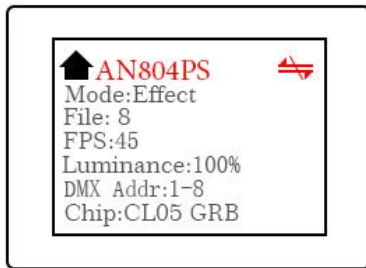
Click the SET button to enter the options, you can modify the option parameters. Click "SET" again to save, and long press "MENU" to return to the initial interface. The output of the controller port is an independent port output, and the port can carry a maximum of 680 pixels;



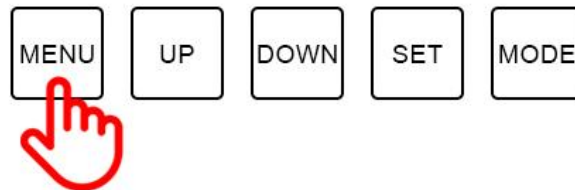
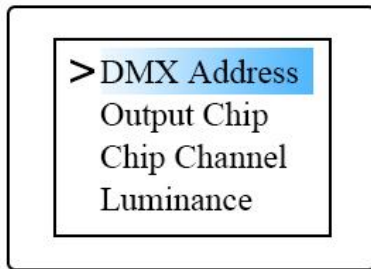
In the same way, parameter settings such as universe, channel, IC, and language can be modified;

Built-in effect mode

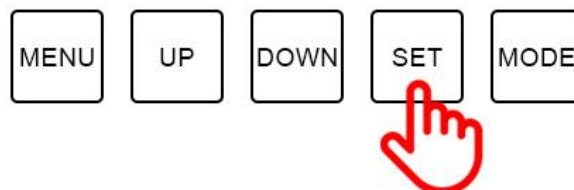
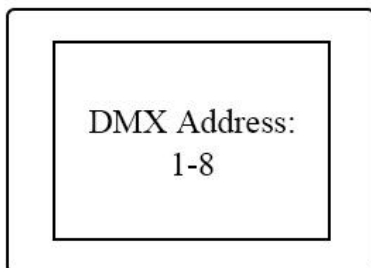
Click "UP" and "Down" to switch the effect, click "MENU" or "SET" to switch the speed; there are 31 built-in effects to choose from;

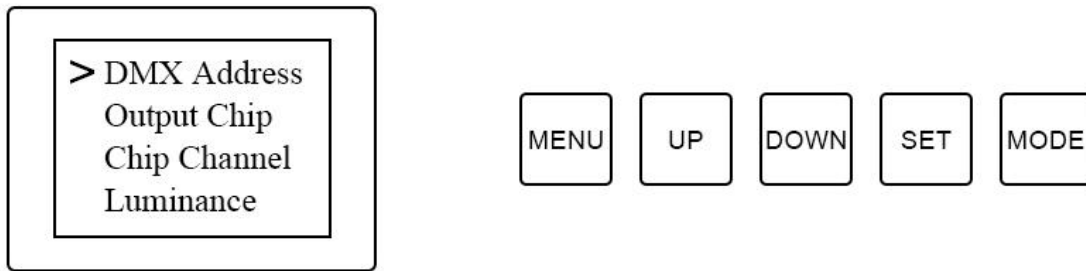


Short press the MENU button to enter the menu bar,



Click the SET button to enter the options, you can modify the option parameters. Click "SET" again to save, and long press "MENU" to return to the initial interface.



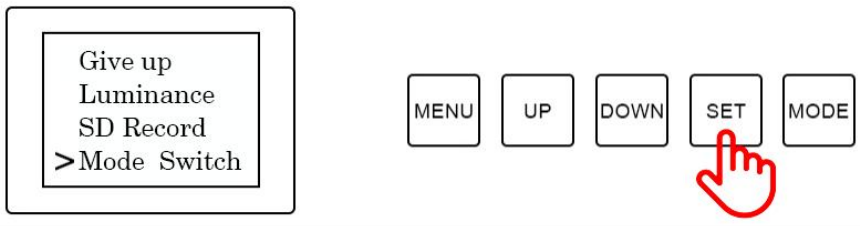


In the same way, parameter settings such as universe, channel, IC, and language can be modified;

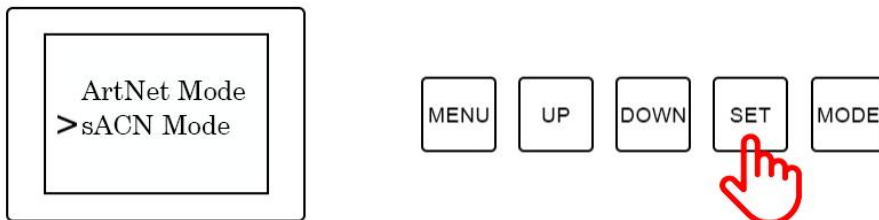
sACN Mode

sACN mode uses Ethernet as the transmission medium. Don't need to set IP address, and it can be used immediately after connecting;

Short press the MENU button to enter the menu, and click the UP DOWN button to switch options;

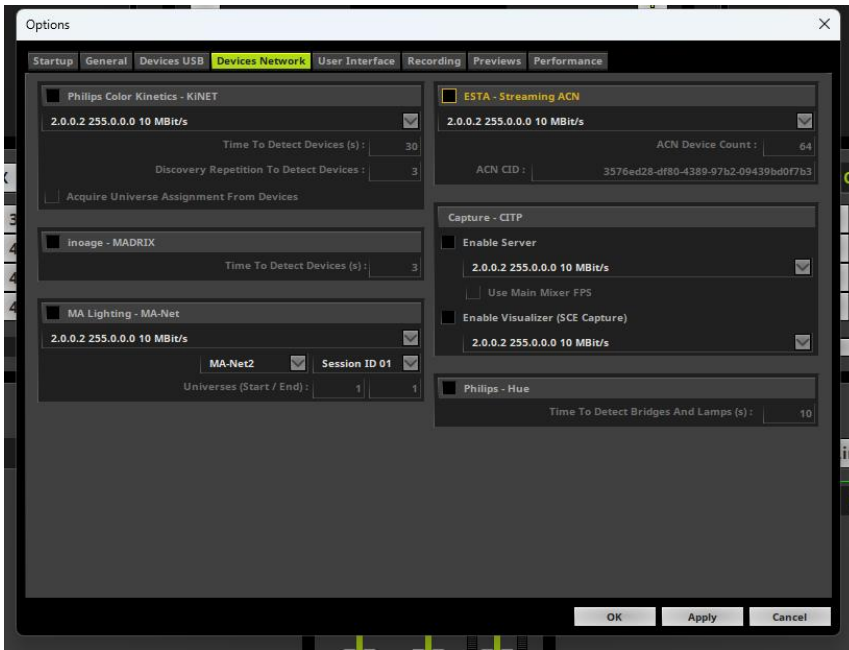


Click SET to enter the menu, click the UP DOWN button to switch options, click "SET" again to save, and press and hold "MENU" to return to the initial interface;

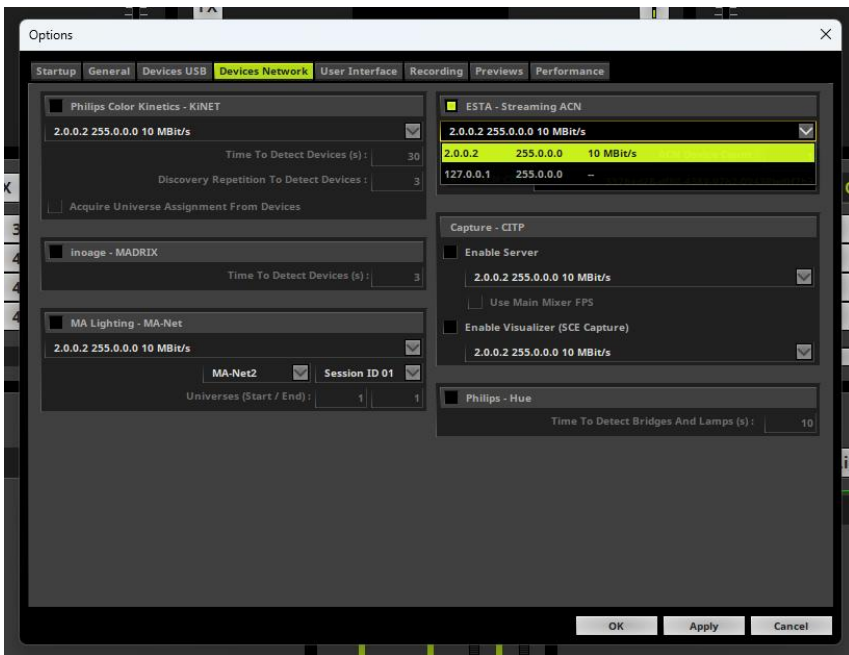


The sACN protocol is a lighting control protocol based on UDP. It uses Ethernet as the transmission medium. There is no need to set the IP address and it can be used immediately after connection;

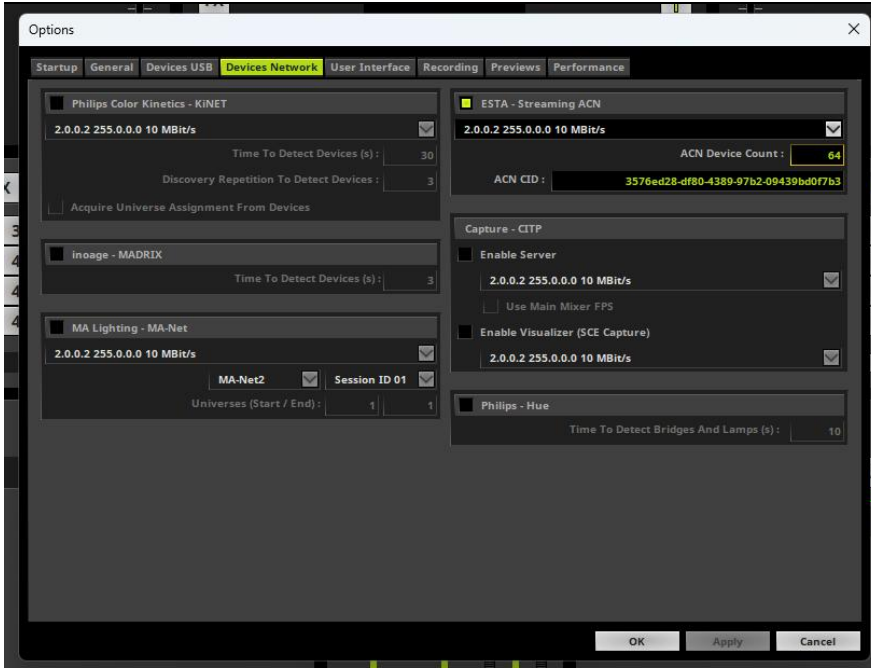
Take Madrix as an example. After connecting the computer and controller, there is no need to set the IP address to open it. Open Preferences-Options-Device Network Interface;



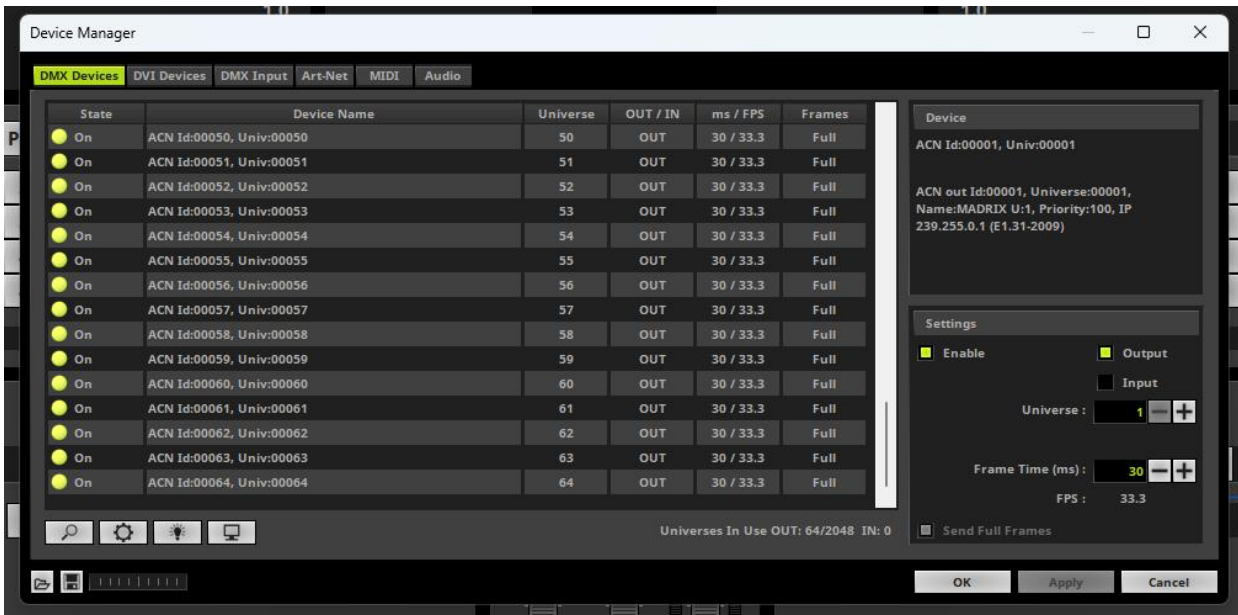
Turn on ESTA-Streaming ACN and select the IP address of the current computer;



In the number of ACN devices, fill in the number of universe of the current controller and click the Apply button;



When we open the device manager list, we can see the list of connected universe;



◆ DMX Channel Table Description

Channel	Name	Figure	Instructions
1	Mode selection	000-247	Call internal 31 effects (one effect for every 8 addresses, and 0-7 for SD card effect 1)
		248-255	Switch to ART_NET mode
2	Speed	000-255	0 is the slowest speed, 255 is the fastest speed, SD card mode is valid
3	Brightness	000-255	0 is the brightness off, 255 is the brightest, SD card mode is valid
4	R- mask	000-255	Subtract red from the effect. 000 is the original effect, and 255 means subtract all red from the effect
5	G-mask	000-255	Subtract green from the effect. 000 is the original effect, and 255 is subtracting all green from the effect
6	B-mask	000-255	Subtract the blue in the effect. 000 is the original effect. 255 means subtract all the blue in the effect
7	invalid	000-007	
	Normally on	008-015	Constant bright white, color selection by mask (brightness, mask channel available)
	stroboscopic	016-255	The higher the value, the faster the strobe (speed, brightness, mask channel is effective)
8	invalid	000-200	
	Record	201-255	When the value of channel 4.5.6 is 255, the recording is valid and the ART_NET effect is recorded to the file specified by channel 1

◆ Application

1. Stage performance;
2. The site of the product/press conference;
3. Concert lighting control;
4. Bar and KTV lighting control;



Attention

1. Pay attention to the use environment and be waterproof and moisture-proof;
2. There is high voltage inside, non-professionals should not disassemble the machine, otherwise the consequences will be at your own risk;
3. The company does not guarantee man-made damage and natural damage;
4. If any abnormality is found during use, please contact us;